

Technical data sheet for

## FAST FRI SINGLE PAN GAS FRYER 600mm

FN8130GE



- High performance single pan fish fryer
- Patented infra-red burner system
- Digital display temperature control with 2 basket timers
- Easy clean stainless steel open pan with 10 year limited warranty
- 31L oil tank capacity
- 2 large or 3 standard basket capacity
- Large capacity cool zone
- 32mm (1 1/4") drain valve
- Stainless steel exterior
- Easy service
- Fully modular
- Low back model (FNL) available

### Overall Construction

- Stainless steel pan with 10 year limited warranty
- Bull nose welded 1.5mm 304 stainless steel
- Splashback 1.5mm 304 stainless steel
- Side panels 1.2mm 304 stainless steel
- Double skin door with 0.9mm 304 stainless exterior
- 32mm (1 1/4") drain valve
- 150mm legs in 63mm dia. heavy-duty 1.2mm 304 stainless steel with adjustable feet
- 3 standard baskets and stainless steel lid supplied standard

### Controls

- Digital display electronic thermostat
- Thermostat range 88-195°C
- 2 programmable basket timers with countdown display and alarms
- Heating and basket drop displays
- Programmable melt cycles
- Over-temperature safety cut-out
- Full electronic ignition system
- Independent LH and RH burner systems
- Lock-out alarm indicators on front

### Cleaning and Servicing

- Open stainless steel pans for easy clean
- Easy clean basket support bar
- 32mm (1 1/4") drain valve for effective draining
- Easy clean stainless steel exterior
- Access to all parts from front of unit

Technical data sheet for

# FAST FRI SINGLE PAN GAS FRYER 600mm

**Waldorf**  
**800 SERIES**

## Specifications

### Production rate

31kg/hr

### Pan Size

Width 515mm

Length 380mm

Oil frying depth 95mm

Oil capacity 31L (46.5lbs shortening)

### Baskets

3 chrome plated wire baskets

140mm W x 335mm D x 145mm H

Optional 2 chrome plated large wire baskets

210mm W x 335mm D x 145mm H

Stainless steel perforated basket support plate

### Burners

2 x 45MJ/hr infra-red burners

### Gas Power

90MJ/hr, 25kW

### Gas connection

R 3/4 (BSP) male

300mm from RH side, 35mm from rear,  
and 125mm from floor

Optional rear connection  
(refer specification drawing)

All units incorporate Natural and LP gas regulator

### Electrical Connection

230-240 Vac, 1P+N+E, 50Hz, 0.5A

3 pin 10A cordset fitted

### DIMENSIONS

Width 600mm

Depth 805mm

Height 915mm

Incl. splashback 1130mm

Incl. low back 1085mm

### NETT WEIGHT

95kg

### PACKING DATA

0.70m<sup>3</sup>, 143kg

Width 870mm

Depth 645mm

Height 1255mm

### GAS TYPES

Available in Natural gas and LP gas

Please specify when ordering

Units supplied complete with gas type  
conversion kits

Other gas types on request

### OPTIONS AT EXTRA COST

Waldorf Filtamax filtration system

Fish plates

Extra standard baskets

Large baskets

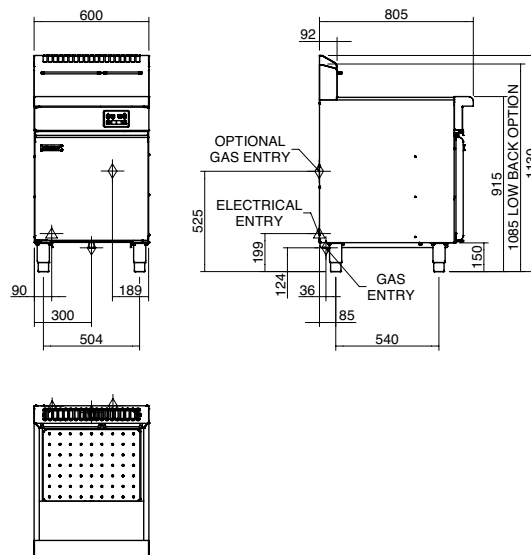
Side splash guards

Joining caps

Castors

Plinth mounting

FN8130GE



**WA DEALER**  
**PRACTICAL PRODUCTS PTY LTD**

an Ali Group Company



The Spirit of Excellence

PH: 08 9302 1299  
51 Paramount Dr Wangara WA 6065  
sales@practicalproducts.com.au  
www.practicalproducts.com.au