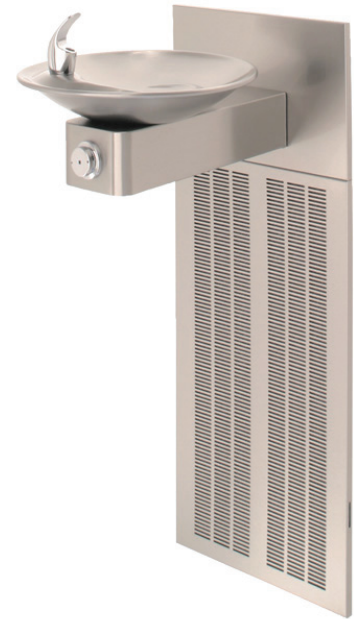


Barrier Free Wall Mounted Drinking Fountain with Chiller

A sophisticated stainless steel barrier-free drinking fountain, with stylish sculpted round bowl and under counter chiller unit. With a one-piece matching brushed finish back panel and vandal resistant bottom plate. Bubbler and push button are polished chrome-plated brass. Waste strainer has a satin finish.

CDF300DC



FEATURES

Drinking Fountain

- Polished chrome-plated brass bubbler & push button
- Satin finish waste strainer
- Vandal-resistant bottom plate
- Special mounting plate
- Brushed Finish 18 gauge Type 304 Stainless Steel
- Removable lower panel for easy installation

Chiller

- Provides up to 30l/hour of mains pressure chilled water.
- Stainless steel storage tank and pipework
- Louvered front ventilation panel
- Easy access for maintenance
- Environmentally friendly R134A refrigerant
- Optional carbon filter available

Product Code

CDF300DC Wall Mounted Round Bowl Barrier Free Drinking Fountain with Chiller



This product is disability friendly, designed to the technical requirements of the ADA (American Disability Act 2010 - Standards for Accessible Design), however it does not comply in full with AS1428.2 1992

Technical Information

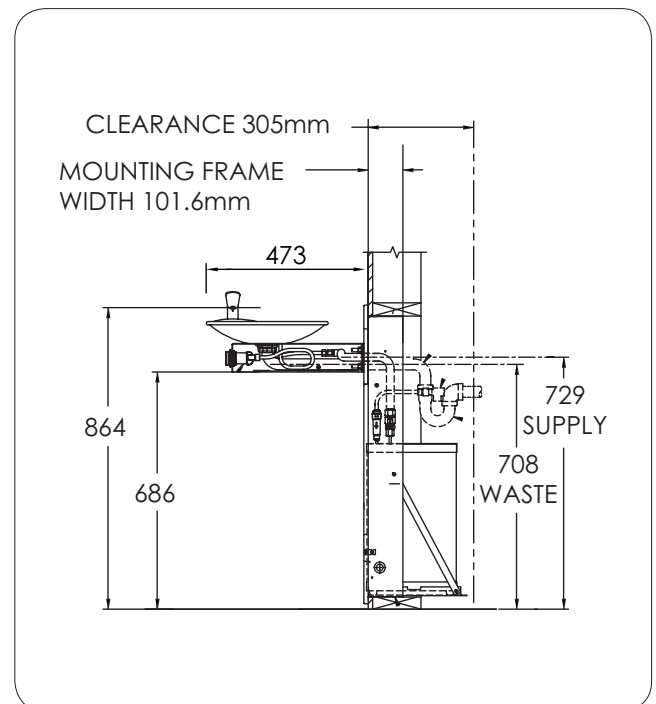
Drinking Fountain

Inlet Connection	½" BSP Female
Minimum Supply Line Size	½"
Working Pressure Range	200 - 500 kPa
Waste Water Outlet Connection	1-1/2" BSP (40mm) Male

Chiller

Flow Rate	30 lph
Refrigerant	R134A
Power Supply	240V/50Hz
Power Connection	3 pin 7.5A Plug with 1.8m lead
Dimensions	437H x 338W x 261D

Enware tapware must be installed in accordance with the provisions of AS/NZS3500 and any relevant local regulations. Installations not complying with AS/NZS3500 may void the product and performance warranty provisions.



WaterMark

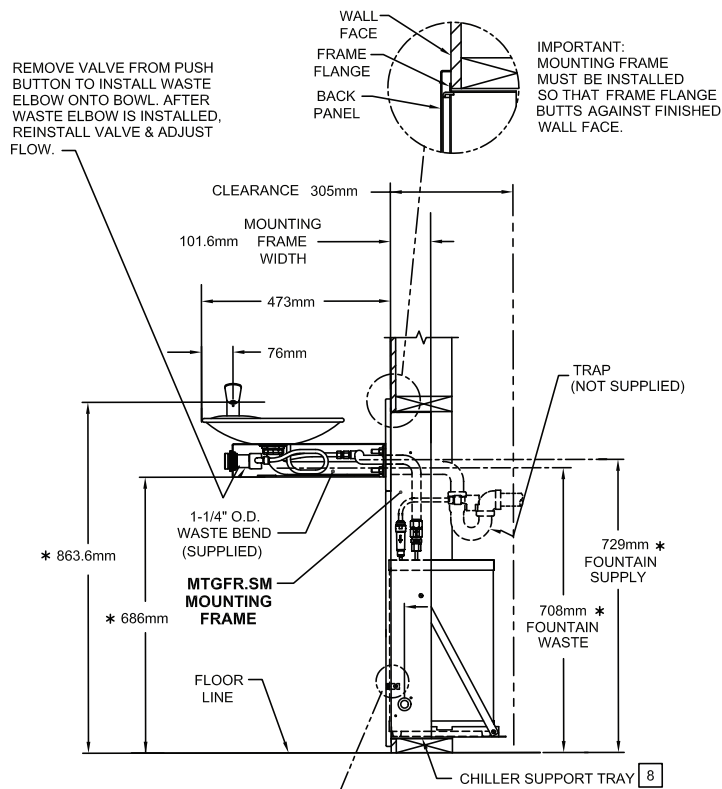
ATS5200.105 WM-022628
IAPMO R&T OCEANA

WA DEALER
PRACTICAL PRODUCTS PTY LTD

PH: 08 9302 1299
51 Paramount Dr Wangara WA 6065
sales@practicalproducts.com.au
www.practicalproducts.com.au

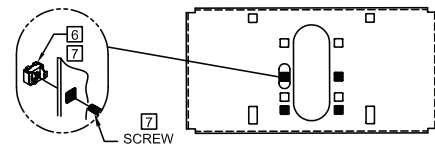
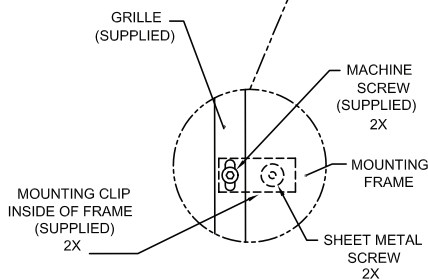
ENWARE
installing confidence

Barrier Free Wall Mounted Drinking Fountain with Chiller

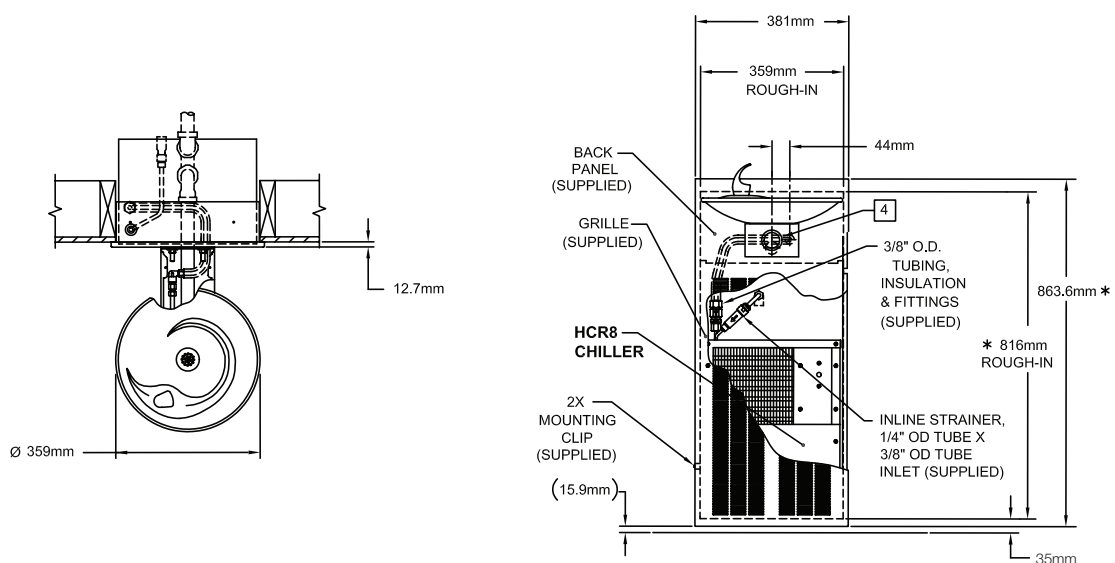


NOTES

1. HOLD ROUGH-IN DIMENSIONS $\pm 1/8"$ (3.2MM)
2. WHEN INSTALLING THIS UNIT. LOCAL STATE OR NATIONAL CODES SHOULD BE ADHERED TO. FOR DIMENSIONS (LOCATIONS), WASTE AND SUPPLY REQUIREMENTS OTHER THAN SHOWN, DIMENSIONS MARKED * MUST BE ADHERED TO ACCORDINGLY.
3. INSTALLER MUST PROVIDE A MAINTENANCE MANUAL FOR PUSH BUTTON AND VALVE INSTALLATION/ MAINTENANCE INSTRUCTIONS
- 4 REFER TO 5874SS OPERATION AND MAINTENANCE MANUAL FOR PUSH BUTTON AND VALVE INSTALLATION/ MAINTENANCE INSTRUCTIONS
- 6 INSERT 5/16"-18 PANEL INSERTS FROM OPPOSITE SIDE AT LOCATIONS SHOWN BY DARKENED HOLES
- 7 FOUNTAIN REMOVAL: FIRST REMOVE SCREWS AND THEN SQUEEZE CLIPS ON NUT RETAINER TO POP OUT. INSTALL IS REVERSE OF REMOVAL.
- 8 ALIGN HOLES IN CHILLER SUPPORT TRAY WITH HOLES IN FRAME AND FASTEN WITH #10 SHEET METAL SCREWS



BOWL MOUNTING PATTERN DETAIL



WA DEALER
PRACTICAL PRODUCTS PTY LTD

PH: 08 9302 1299
51 Paramount Dr Wangara WA 6065
sales@practicalproducts.com.au
www.practicalproducts.com.au

ENWARE
installing confidence