



Electrolux

Modular Cooking Range Line 700XP 2-Burner Gas Boiling Top

ITEM # _____
MODEL # _____
NAME # _____
SIS # _____
AIA # _____



Modular Cooking Range Line
700XP 2-Burner Gas Boiling Top

371166 (E7GCGD2C0A) 2-burner (5,5 kW each) gas boiling top

Short Form Specification

Item No. _____

Unit to be Electrolux 700XP two 5.5 kW gas boiling top range. Unit to be installed on open base installations, bridging supports or cantilever systems. High efficiency flower flame burners with flame regulator and protected pilot light. Flame failure device as standard on burners to protect against accidental extinguishing. Exterior panels in Stainless steel with Scotch Brite finish. Pan supports in heavy duty cast iron. One piece pressed work top in 1.5 mm thick Stainless steel. Unit has right-angled side edges to allow flush-fitting junction between units.

Main Features

- Unit to be mounted on open base cupboards, bridging supports or cantilever systems.
- The two 5.5 kW high efficiency flower flame burners allow the flame to adapt to different size pans.
- Gas appliance supplied for use with natural or LPG gas, conversion jets supplied as standard.
- Large sized pan support in cast iron (stainless steel as option) with long center fins to allow the use of the largest down to the smallest pans.
- Pan supports in cast iron are washable in a dishwasher.
- Burners to feature flame regulator.
- Flame failure device on each burner protects against gas leakage when accidental extinguishing of the flame occurs.
- Protected pilot light.
- IPX 4 water protection.

Construction

- All exterior panels in Stainless Steel with Scotch Brite finishing.
- One piece pressed 1.5 mm work top in Stainless steel.
- Model has right-angled side edges to allow flush fitting joints between units, eliminating gaps and possible dirt traps.

APPROVAL: _____



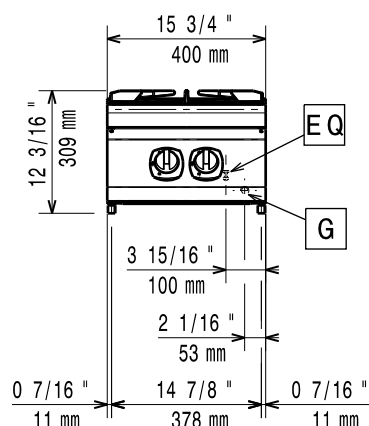
Electrolux

Modular Cooking Range Line
700XP 2-Burner Gas Boiling Top

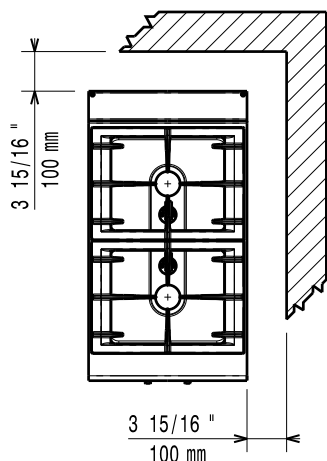
Optional Accessories

- | | | | |
|---|-------------------------------------|---|-------------------------------------|
| • Draught diverter, 120 mm diameter | PNC 206126 | • 2 side covering panels for top appliances | PNC 216277 <input type="checkbox"/> |
| | <input type="checkbox"/> | • Double burner smooth plate for direct cooking | PNC 921684 <input type="checkbox"/> |
| • Matching ring for flue condenser, 120 mm diameter | PNC 206127 <input type="checkbox"/> | • Double burner ribbed plate for direct cooking | PNC 921685 <input type="checkbox"/> |
| • Kit 4 wheels - 2 swivelling with brake - it is mandatory to install base support and wheels | PNC 206135 <input type="checkbox"/> | • Pressure regulator for gas units | PNC 927225 <input type="checkbox"/> |
| • Support for bridge type installation, 800mm | PNC 206137 <input type="checkbox"/> | | |
| • Support for bridge type installation, 1000mm | PNC 206138 <input type="checkbox"/> | | |
| • Support for bridge type installation, 1200mm | PNC 206139 <input type="checkbox"/> | | |
| • Support for bridge type installation, 1400mm | PNC 206140 <input type="checkbox"/> | | |
| • Support for bridge type installation, 1600mm | PNC 206141 <input type="checkbox"/> | | |
| • Support for bridge type installation, 400mm | PNC 206154 <input type="checkbox"/> | | |
| • Single burner smooth plate for direct cooking - fits frontal burners only | PNC 206260 <input type="checkbox"/> | | |
| • Single burner ribbed plate for direct cooking- fits frontal burners only | PNC 206261 <input type="checkbox"/> | | |
| • Single burner radiant plate for pan support | PNC 206264 <input type="checkbox"/> | | |
| • Water column with swivel arm (water column extension not included) | PNC 206289 <input type="checkbox"/> | | |
| • Water column extension for 700 line | PNC 206291 <input type="checkbox"/> | | |
| • Stainless steel double grid for 2 burners | PNC 206297 <input type="checkbox"/> | | |
| • Chimney upstand, 400mm | PNC 206303 <input type="checkbox"/> | | |
| • Right and left side handrails | PNC 206307 <input type="checkbox"/> | | |
| • Flue condenser for 1/2 module, 120 mm diameter | PNC 206310 <input type="checkbox"/> | | |
| • Wok pan support for open burners (700/900) | PNC 206363 <input type="checkbox"/> | | |
| • Base support for feet or wheels - 400mm (700/900) | PNC 206366 <input type="checkbox"/> | | |
| • Base support for feet or wheels - 800mm (700/900) | PNC 206367 <input type="checkbox"/> | | |
| • Rear paneling - 600mm (700/900XP) | PNC 206373 <input type="checkbox"/> | | |
| • Rear paneling - 800mm (700/900) | PNC 206374 <input type="checkbox"/> | | |
| • Rear paneling - 1000mm (700/900) | PNC 206375 <input type="checkbox"/> | | |
| • Rear paneling - 1200mm (700/900) | PNC 206376 <input type="checkbox"/> | | |
| • Kit town gas nozzles (G150) for 700 gas range | PNC 206387 <input type="checkbox"/> | | |
| • Frontal handrail, 400mm | PNC 216046 <input type="checkbox"/> | | |
| • Frontal handrail, 800mm | PNC 216047 <input type="checkbox"/> | | |
| • Frontal handrail, 1200mm | PNC 216049 <input type="checkbox"/> | | |
| • Frontal handrail, 1600mm | PNC 216050 <input type="checkbox"/> | | |
| • Large handrail - portioning shelf, 400mm | PNC 216185 <input type="checkbox"/> | | |
| • Large handrail - portioning shelf, 800mm | PNC 216186 <input type="checkbox"/> | | |

Front

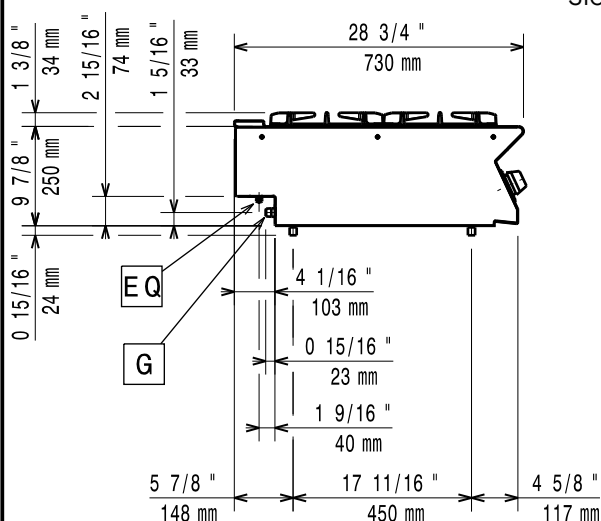


Top



EQ = Equipotential screw
G = Gas connection

Side



Gas

Gas Power:

371000 (E7GCGD2C00) 37499 Btu/hr (11 kW)

Gas Type Option:

LPG; Natural Gas; Town

Gas Inlet:

1/2"

Natural gas - Pressure:

7" w.c. (17.4 mbar)

LPG Gas Pressure:

11" w.c. (27.7 mbar)

Key Information:

Front Burners Power:

5.5 - kW

Back Burners Power:

5.5 - 0 kW

Back Burners Dimension - mm

Ø 60

Front Burners Dimension - mm

Ø 60

Net weight:

20 kg

Shipping weight:

27 kg

Shipping height:

540 mm

Shipping width:

460 mm

Shipping depth:

820 mm

Shipping volume:

0.2 m³

If appliance is set up or next to or against temperature sensitive furniture or similar, a safety gap of approximately 150 mm should be maintained or some form of heat insulation fitted.