

# ELECTRIC COOKTOPS 300mm

E512D-B, E512C-B

---

- Heavy-duty construction
- 2.4kW open radiant elements
- Optional hot plate elements
- 300mm griddle plate options
- Stainless steel exterior
- Easy clean
- Easy service
- Fully modular



E512D-B

## Overall Construction

### Cooktop

- Welded hob with 1.5mm 304 stainless steel bull nose
- Side panels 1.2mm 304 stainless steel
- Splashback 1.2mm 304 stainless steel
- Vitreous enamelled control panel
- 2.4kW open radiant elements in heavy-duty welded element frames
- Stainless steel spill tray
- Hot plate elements with machine finished 8mm steel plate (optional extra)
- 12mm thick mild steel griddle plates
- 2.5mm 304 stainless steel griddle splash guards
- Aluminised steel internal construction

### Bench mount (supplied as -B model)

- Four 63mm dia. heavy-duty 1.2mm 304 stainless steel bench legs with adjustable feet
- Adjustable height 80mm – 105mm

## Controls

- Large easy use control knob - heat resistant reinforced
- Easy view control settings on knob
- Radiant elements with energy regulator controls
- Hot Plate elements with energy regulator controls
- 50-320°C thermostat on griddle section
- Power indicator lights for each element control
- Indicator lights for power and heating for each griddle control

## Cleaning and Servicing

- All models with easy clean stainless steel external finish
  - Stainless steel spill tray
  - Lift up element and griddle sections
  - Access to all parts from front of unit
-

# ELECTRIC COOKTOPS 300mm

E512D-B, E512C-B

## Specifications

### Cooktop

2.4 kW Open Radiant elements  
2.0 kW Hot Plate elements  
3.4 kW Griddle elements  
(per 300mm griddle section)

### Griddle Plate

300mm Griddle cooking surface  
292mm x 475mm, 1387cm<sup>2</sup>

## Electrical requirements

### E512D

4.8 kW, 230-240Vac, 50/60hz, 1P+N+E, 20A

### E512C

3.4 kW, 230-240Vac, 50/60hz, 1P+N+E, 14.2A

## Dimensions

Width 300mm  
Depth 812mm  
Height 315mm  
Incl. splashback 485mm

## Nett weight

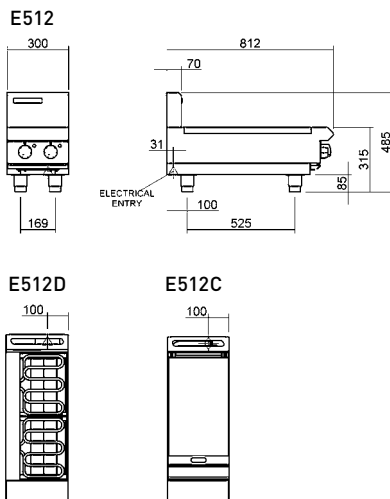
32kg

## Packing data

0.20m<sup>3</sup>, 55kg  
Width 870mm  
Depth 350mm  
Height 665mm

## Options

Hot plate elements  
(replace individual open radiant elements)  
Ribbed griddle plates



**WA DEALER**  
**PRACTICAL PRODUCTS PTY LTD**

PH: 08 9302 1299  
51 Paramount Dr Wangara WA 6065  
sales@practicalproducts.com.au  
www.practicalproducts.com.au