

ELECTRIC FLOOR MOUNTED KETTLES - 80 LITRE

Lever tilt, electric, self contained single kettle with 80lt capacity, 2/3 steam jacketed. Solid state controls for accurate temperature control ($\pm 1^{\circ}\text{C}$) and low water safety. All exterior surfaces are stainless steel.

STANDARD FEATURES

- Manual tilting, balanced design
- Water resistant controls, splash-proof construction
- Welded-in heating elements
- 50 psi steam jacket rating for higher cooking temperatures
- Solid state water level control
- Splash proof element cover with a double gasket seal
- 152mm level adjustable feet
- Large pouring lip for high capacity and chunky products
- Steam jacket filled with treated water, venting and/or refilling is not required
- Accurate, constant solid state temperature controls (mechanical thermostat not as accurate) - less than $\pm 1^{\circ}\text{C}$ variance (ideal for simmering). Operating temperature range from 63°C - 127°C
- Re-inforced rolled rim design prevents damage to kettle rim
- Easily cleaned: kettle and all exterior surfaces are of type 304 stainless steel with an #4 finish
- Rear mounted easy access pressure gauge and pressure relief valve to prevent tampering.

OPTIONAL FEATURES

- Lift-off Cover (CL20)
- Measuring Strip (MS)
- Kettle Markings (KM)
- Food Strainer (FS)
- Basket Strainer (BS-)
- Protective Control Panel (PCE)
- Double pantry faucet with swing spout and mounting bracket (DPK2)
- Type 316 Stainless Steel Kettle interior for high acid food products (316)
- Kettle Accessory Kit (KAK)
 - Clean-up Brush (CB) - 36" Kettle Paddle (KP)
 - 36" Kettle Whip (KW) - 36" Kettle Brush (KB)
 - Draw-off Brush (DB) - 24 oz. Ladle (KL)
- Sliding Drain Drawer (-SLD)

TECHNICAL DATA

Power Supply: 3NAC 415V 50Hz, 20.9 amp
(Cable & Plug not included)

Total Output: 15 kW

Capacities (per kettle):
(in 115 gram servings, other sizes may be calculated)
20 gallons / 80 litres - 704 servings

SHIPPING DATA

Shipping Weight: 123kg

Shipping Dimensions: 965W x 965D x 1371H mm

SPECIFICATIONS ARE SUBJECT TO CHANGE WITHOUT NOTICE.

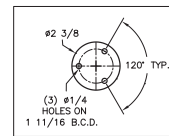
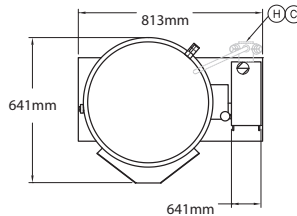
CODING GUIDE FOR OPTIONS

OPT1 316 Liner only

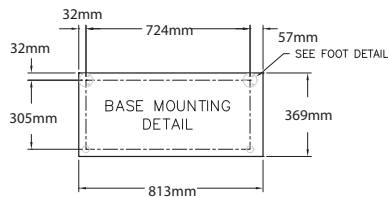
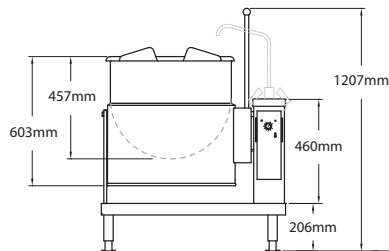
*add OPT suffix to product code.

WA DEALER
PRACTICAL PRODUCTS PTY LTD

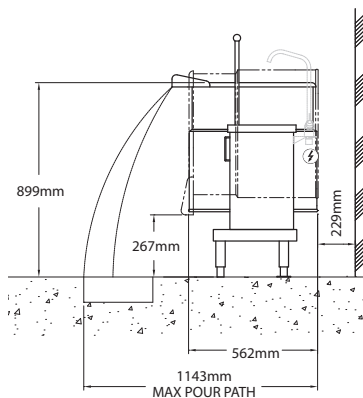
PH: 08 9302 1299
51 Paramount Dr Wangara WA 6065
sales@practicalproducts.com.au
www.practicalproducts.com.au



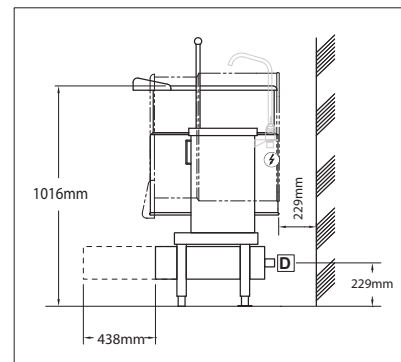
FOOT DETAIL



BASE MOUNTING
DETAIL



MAX POUR PATH



DIMENSIONS FOR UNITS WITH
OPTIONAL SLIDING DRAIN DRAWER

DRAIN

1 1/2" N.P.T. pipe (for optional sliding drain drawer).

WATER

3/8" O.D. copper tube or 1/2" N.P.T. pipe.

When ordered with optional faucet.

CLEARANCE

RIGHT = 0", LEFT = 0"
REAR = 6" (152mm)