

GLO-RAY® *Designer Series* **HEATED DISPLAY WARMERS – SLANT MODEL**

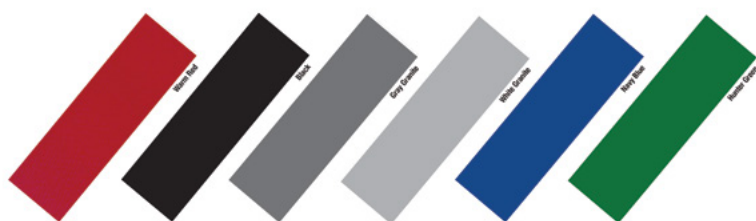
Boost impulse sales by showcasing your hot foods in the Hatco Glo-Ray merchandising warmers.

Designed specifically for displaying wrapped or boxed product, these warmers hold hot food safely at proper serving temperatures and are seen in many of the best known venues around the world.

- ▶ Prefocused infrared top heat directs heat to the outer edges where heat loss is greatest.
- ▶ Convenient for self-serve or quick-serve areas.
- ▶ Available in two-tier models with horizontal or slanted shelves.
- ▶ Adjustable product divider rods sort food displays for convenience and product appeal.
- ▶ Thermostatically controlled hard-coated heated base extends holding times.
- ▶ Food grade Teflon coated incandescent lights illuminate the holding areas and product for maximum visibility.



CHOOSE FROM THIS RANGE OF DESIGNER COLOURS



NOTE: Colours shown apply to Horizontal and Slant models. Please specify colour at time of ordering, otherwise unit will be supplied with black inserts and end caps.

Divider Rods

Model Width	Divider Rods Provided	Average Chute Width
30.25" (768 mm)	5 Rods per Shelf	3.73" (95 mm)
36.25" (921 mm)	6 Rods per Shelf	4.02" (102 mm)
42.25" (1073 mm)	7 Rods per Shelf	4.23" (107 mm)
48.25" (1226 mm)	8 Rods per Shelf	4.40" (111 mm)
54.25" (1378 mm)	9 Rods per Shelf	4.54" (115 mm)
60.25" (1530 mm)	10 Rods per Shelf	4.65" (118 mm)
66.25" (1683 mm)	12 Rods per Shelf	4.36" (110 mm)

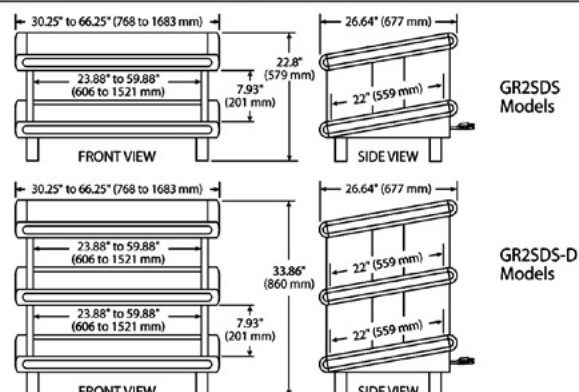
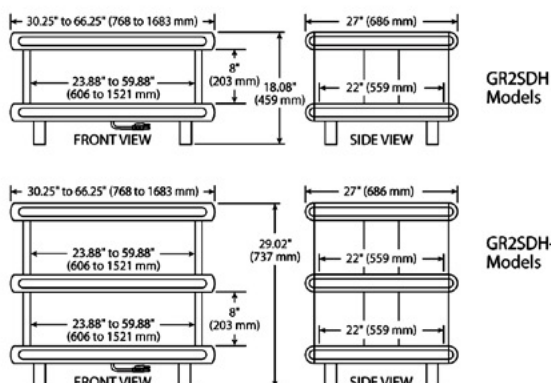
CODE	DESCRIPTION	KW	AMP
GR2SDS-24D	Dual Shelf - 770 mmW	1.64kw	10 amp
GR2SDS-30D	Dual Shelf - 920 mmW	2.04kw	10 amp
GR2SDS-36D	Dual Shelf - 1070 mmW	2.44kw	15 amp
GR2SDS-42D	Dual Shelf - 1220 mmW	2.98kw	15 amp
GR2SDS-48D	Dual Shelf - 1380 mmW	3.38kw	15 amp
GR2SDS-54D	Dual Shelf- 1530 mmW	3.78kw	20 amp
GR2SDS-60D	Dual Shelf - 1680 mmW	4.42kw	20 amp



GLO-RAY® DESIGNER MERCHANDISING WARMERS

Models GR2SDH-24, -30, -36, -42, -48, -54, -60
GR2SDS-24, -30, -36, -42, -48, -54, -60

GR2SDH-24D, -30D, -36D, -42D, -48D, -54D, -60D
GR2SDS-24D, -30D, -36D, -42D, -48D, -54D, -60D



SPECIFICATIONS

Horizontal Models

	Model*	Watts	Width	Shipping Weight
Single Shelf	GR2SDH-24	820	30.25" (768 mm)	87 lbs. (40 kg)
	GR2SDH-30	1020	36.25" (921 mm)	120 lbs. (55 kg)
	GR2SDH-36	1220	42.25" (1073 mm)	129 lbs. (59 kg)
	GR2SDH-42	1490	48.25" (1226 mm)	138 lbs. (63 kg)
	GR2SDH-48	1690	54.25" (1378 mm)	160 lbs. (73 kg)
	GR2SDH-54	1890	60.25" (1530 mm)	172 lbs. (78 kg)
Dual Shelf	GR2SDH-60	2210	66.25" (1683 mm)	187 lbs. (85 kg)
	GR2SDH-24D	1640	30.25" (768 mm)	150 lbs. (68 kg)
	GR2SDH-30D	2040	36.25" (921 mm)	178 lbs. (81 kg)
	GR2SDH-36D	2440	42.25" (1073 mm)	198 lbs. (90 kg)
	GR2SDH-42D	2980	48.25" (1226 mm)	218 lbs. (99 kg)
	GR2SDH-48D	3380	54.25" (1378 mm)	238 lbs. (108 kg)
	GR2SDH-54D	3780	60.25" (1530 mm)	258 lbs. (117 kg)
	GR2SDH-60D	4420	66.25" (1683 mm)	280 lbs. (127 kg)

Slant Models

	Model*	Watts	Width	Shipping Weight
Single Shelf	GR2SDS-24	820	30.25" (768 mm)	104 lbs. (47 kg)
	GR2SDS-30	1020	36.25" (921 mm)	116 lbs. (53 kg)
	GR2SDS-36	1220	42.25" (1073 mm)	136 lbs. (62 kg)
	GR2SDS-42	1490	48.25" (1226 mm)	155 lbs. (70 kg)
	GR2SDS-48	1690	54.25" (1378 mm)	164 lbs. (74 kg)
	GR2SDS-54	1890	60.25" (1530 mm)	182 lbs. (83 kg)
Dual Shelf	GR2SDS-60	2210	66.25" (1683 mm)	202 lbs. (92 kg)
	GR2SDS-24D	1640	30.25" (768 mm)	162 lbs. (74 kg)
	GR2SDS-30D	2040	36.25" (921 mm)	174 lbs. (79 kg)
	GR2SDS-36D	2440	42.25" (1073 mm)	190 lbs. (86 kg)
	GR2SDS-42D	2980	48.25" (1226 mm)	218 lbs. (99 kg)
	GR2SDS-48D	3380	54.25" (1378 mm)	240 lbs. (109 kg)
	GR2SDS-54D	3780	60.25" (1530 mm)	260 lbs. (118 kg)
	GR2SDS-60D	4420	66.25" (1683 mm)	296 lbs. (135 kg)

* NSF requires units over 36" (914 mm) in width or weighing more than 80 lbs. (36 kg) to be either sealed, or raised on the installation surface with the 4" (102 mm) legs included.

OPTIONS (NOT FOR RETROFIT)

- ☐ Unit and Inset Panel Designer Colors: Warm Red, Black, Gray Granite, White Granite, Navy Blue, Hunter Green, Antique Copper, non-standard colors are non-returnable on unit
- ☐ Dark Gray Corner Caps (Black is standard)
- ☐ 5" (127 mm) Sneeze Guard (Customer side only on slant models)
- ☐ Plexi-Glass Flip-up Doors
- ☐ Front Glass in lieu of channel dividers and divider rods

- ☐ Indicating Temperature Control (ITC)
- ☐ Halogen Bulbs in lieu of Standard Display Lights
- ☐ Customer Side Front Glass (in lieu of Sneeze Guards or Flip-up Doors) (Cannot have channel dividers or divider rods)

ACCESSORIES

- ☐ Additional Stainless Steel Divider Rods
- ☐ Flip-up Control Cover
- ☐ Display Sign Holder (Signs not included)

DIMENSIONS

Horizontal Models (GR2SDH) –

Single: 30.25" - 66.25"W x 27"D* x 18.08"H (768-1683 x 686 x 459 mm).
Dual: 30.25" - 66.25"W x 27"D* x 29.02"H (768-1683 x 686 x 737 mm).

Slant Models (GR2SDS) –

Single: 30.25" - 66.25"W x 26.64"D* x 22.8"H (768-1683 x 677 x 579 mm).
Dual: 30.25" - 66.25"W x 26.64"D* x 33.86"H (768-1683 x 677 x 860 mm).

Heated Surface: 23.88" - 59.88"W x 22"D (606-1521 x 559 mm).

* Optional ITC: adds 1.83" (47 mm) to model depth.

VOLTAGE

GR2SDH-24 to -48 & GR2SDS-24 to -48: 120 volts, single phase (uses NEMA 5-15P, models GR2SDH-42 to -48 & GR2SDS-42 to -48 uses NEMA 5-20P for Canada).

GR2SDH-54 & GR2SDS-54: 120 volts, single phase (uses NEMA 5-20P).

GR2SDH-60 & GR2SDS-60: 120 volts, single phase (uses NEMA 5-30P).

GR2SDH-24D & GR2SDS-24D: 120 volts, single phase (uses NEMA 5-15P, uses NEMA 5-20P for Canada).

GR2SDH-30D to -54D & GR2SDS-30D to -54D: 120/208 volts, or 120/240 volts, single phase, 4-wire (uses NEMA L14-20P).

GR2SDH-60D & GR2SDS-60D: 120/208 volts or 120/240 volts, single phase, 4-wire (uses NEMA L14-30P).

Export voltages available.

CORD LOCATION

Back center of base on control side.

Due to our policy of continuous product improvement, specifications are subject to change without notice.
All models sold in Australia/New Zealand are 240Volt single phase, models above 15A are supplied unplugged.

WA DEALER
PRACTICAL PRODUCTS PTY LTD

PH: 08 9302 1299
51 Paramount Dr Wangara WA 6065
sales@practicalproducts.com.au
www.practicalproducts.com.au