

Automatic rack type dishwasher, capacity up to 250 racks, 4,500 plates or 9,000 glasses per hour.

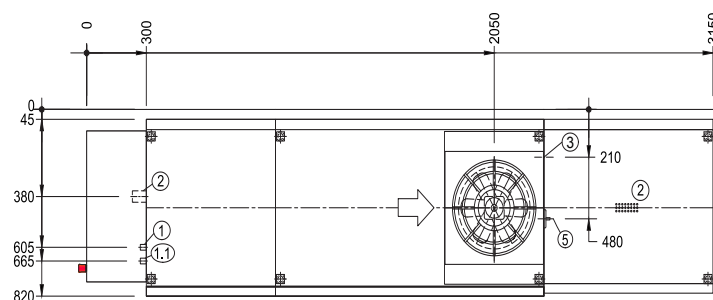
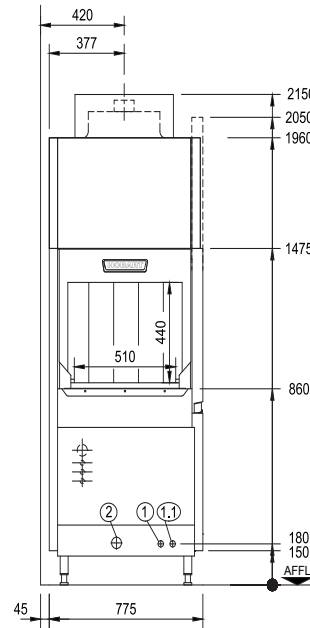
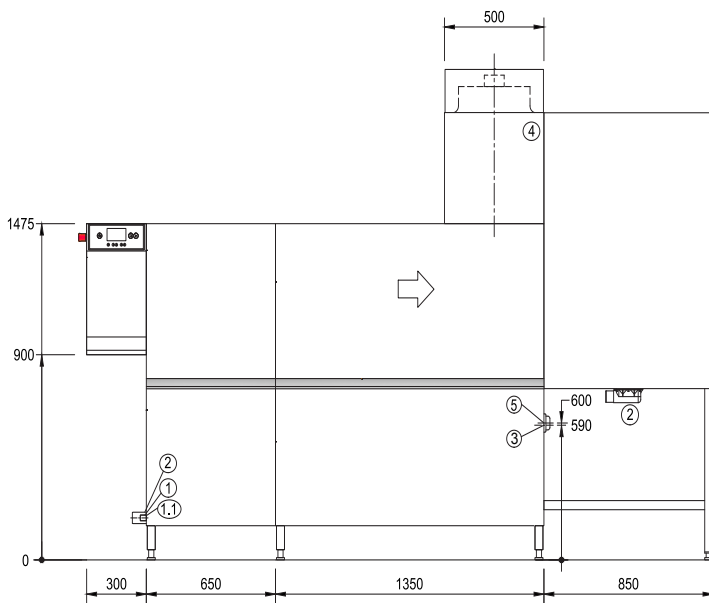


Product Advantages:

- INFOTRONIC clear text colour touch screen control
- High performance "L" prewash with 1.5kW wash pump
- 1.8kW stainless steel main wash pump
- C20 heat recovery system to minimise energy consumption and operating costs
- Low 160L per hour triple rinse with rinse pump to guarantee rinse volume
- AUTOMATIC SOIL REMOVAL (ASR) - less manual handling, less dumping & re-filling, higher throughput
- Autotimer for efficient time saving operation
- 100% hygiene deep drawn stainless steel wash tank with stainless steel tank strainer system
- Door insulation included for improved work environment & lower operating costs
- Efficient 3-speed operation (120/180/250 racks/hr)
- Includes emergency stop and main switch
- Wash-rinse actuator to ensure economic operation
- New washarms without end caps

Connections mirrorwise for R/L working direction

Machine shown with optional CDS-90-15 dryer.



1 fresh water connection, soft	R 3/4" 0 - 3°d, (0,5mmol/l); max. 160-180 l/h, demineralized water blended to have appr. 80 µs/cm
1.1 hot water connection for separate tank fill (option)	R 3/4" 0 - 3°d; (1,4mmol/l)
2 drain	DN 50
3 power supply	without dryer - 27.6kW with dryer - 32.7kW
4 Ventilation / vent. condition	appr. 280 m³/h, 25-28°C, 2,7 g/m³ humidity
5 main switch	

WA DEALER
PRACTICAL PRODUCTS PTY LTD

PH: 08 9302 1299
51 Paramount Dr Wangara WA 6065
sales@practicalproducts.com.au
www.practicalproducts.com.au