



# HOSHIZAKI

# IM-240ANE-28

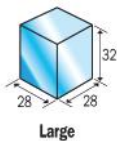
Cube Ice Maker



## PRODUCT FEATURES

- New intelligent control circuit dedicated to saving power and water consumption.
- Micro computer controller controls ice making process to work at peak performance in any conditions.
- Inbuilt safety features - freeze cycle back up timer, defrost back up, low voltage and high amp protector.
- New 7 segment operational display panel for ease of use.
- Unique closed cell water circuit for ultimate contamination protection.
- Durable stainless steel exterior.
- Easily accessible and cleanable air filters reduce costly callouts.
- Exceptionally hard crystal clear cubes that melt slowly.
- Auto rinse and flush cycle.
- 3 year parts and labour warranty on entire unit, 5 year (parts only) on compressor & air cooled condenser coil.

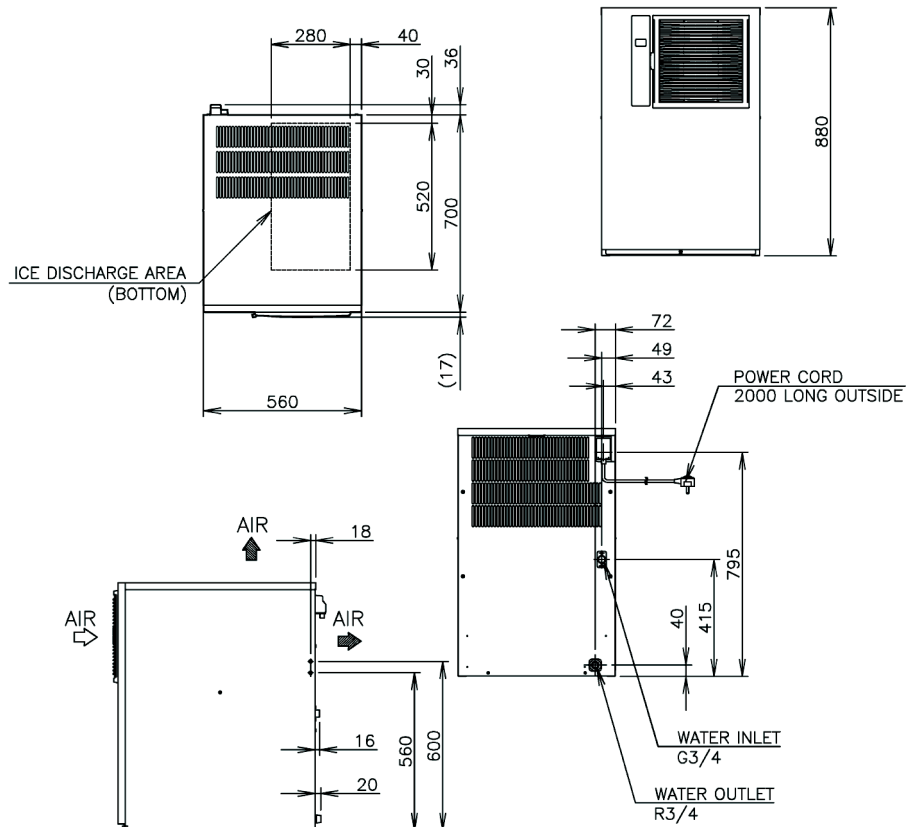
### CUBE SIZE:



Large



## TECHNICAL DRAWING



**WA DEALER**  
**PRACTICAL PRODUCTS PTY LTD**

PH: 08 9302 1299  
51 Paramount Dr Wangara WA 6065  
sales@practicalproducts.com.au  
www.practicalproducts.com.au

## PRODUCT SPECIFICATION

<b>Production Capacity per 24hours</b>	Approx. 220kg @10°C Air temp; 10°C Water Approx. 205kg @21°C Air temp; 15°C Water Approx. 160kg @32°C Air temp; 21°C Water
<b>Max Storage Capacity</b>	Select Bin & Kit
<b>Freeze Cycle Time</b>	Approx. 20 Min
<b>Ice Production Per cycle</b>	Approx. 3.2kg/140pcs
<b>Dimensions</b>	560mm (W) x 700mm (D) x 880mm (H)
<b>Cooling</b>	Air
<b>Weight Net/Gross (kg) AC</b>	80 / 95
<b>Supply Voltage</b>	1 PHASE 220-240V 50Hz / 10AMP Plug
<b>Amperage</b>	Running: 6.6A Rated: 6.6A Starting: 35A
<b>Refrigerant Refrigerant</b>	R404A / 480g
<b>Charge Operating Conditions</b>	Ambient Temp.: 1-40°C Water Supply Temp.: 5-35°C Water Supply Pressure: 0.07-0.8MPa (0.7-8bar) Voltage Range: Rated Voltage ±6%
<b>Double Production Capacity</b>	Achieved by stacking 2 units side by side. For pricing please contact your Hoshizaki Sales Rep.



Descriptions and specifications are subject to change at any time, without notice. Illustrations for demonstration purposes.

Copyright © 2019 Hoshizaki Lancer Pty Ltd. All right reserved. E&OE Date: May 2019