

## Main Features

- Innovative head/body hooking system that enhances resistance, extends machine life and saves the operator time.
- Hooking system ensures minimal shaking and vibration, ensuring the components wear less and last longer
- The bowls, wire lid and dough breakers are made of 18/10 AISI 304 stainless steel, the kneading hook is made of forged stainless steel
- Safety microswitch activates if guard is lifted during operation
- Heavy duty chain driven head and bowl operation
- Timer controlled
- Includes castors with brakes

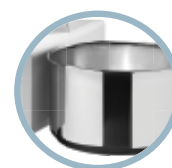


## SPECIFICATIONS

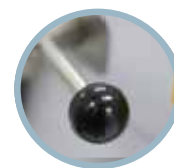
Voltage	240V
Power	1.5 kW Single Phase
speed	140 rpm
Weight	115 kg
Plug Supplied	Yes 10 amp
Capacity	50 lt
Finished Dough	38 kg
Bowl Dim	450 x 300 mm
Warranty	4 Year Warranty (2 yr Labour 4 yr Parts)



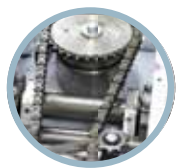
Patented hooking system



Removable bowl



Single lever operation

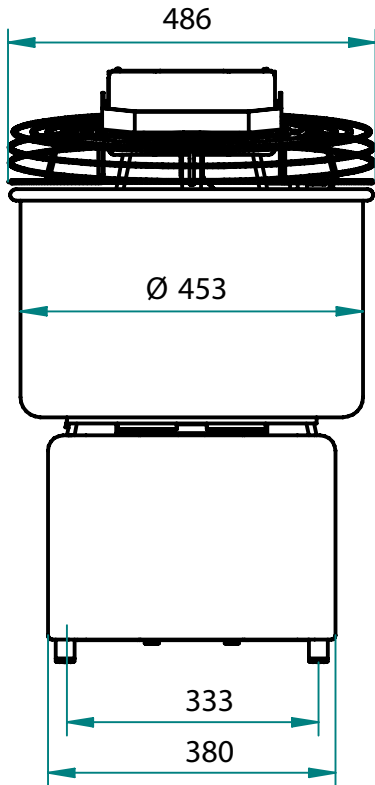


Chain driven head & bowl

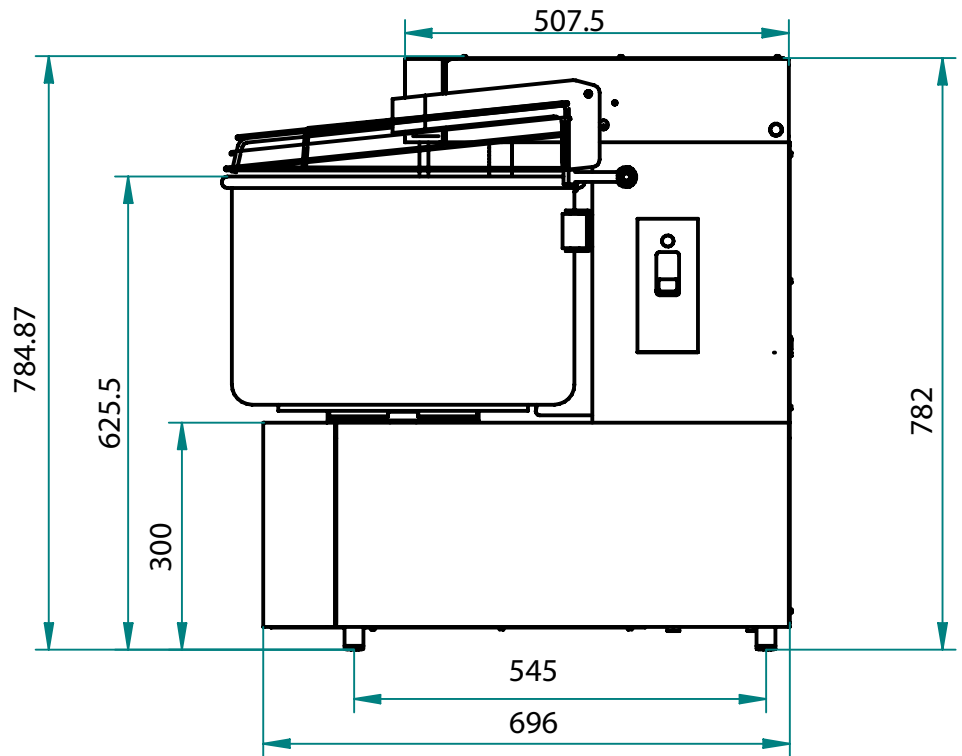
## DIMENSIONS

External Width	480mm
External Depth	800mm
External Height	770mm (without castors)

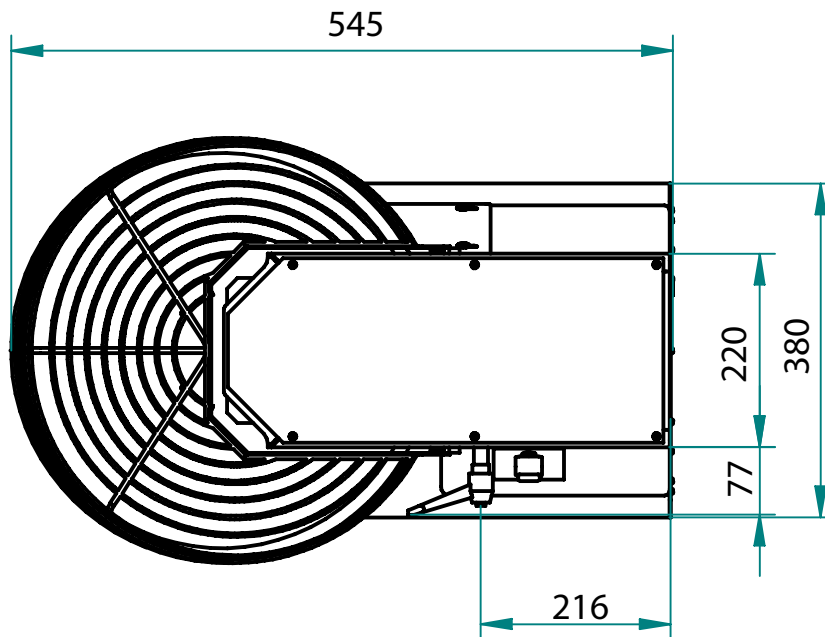
## FRONT



## SIDE



## TOP



We reserve the right to alter specifications without notice.



WA DEALER  
PRACTICAL PRODUCTS PTY LTD

PH: 08 9302 1299  
51 Paramount Dr Wangara WA 6065  
sales@practicalproducts.com.au  
www.practicalproducts.com.au