

# UPRIGHT

## IM20



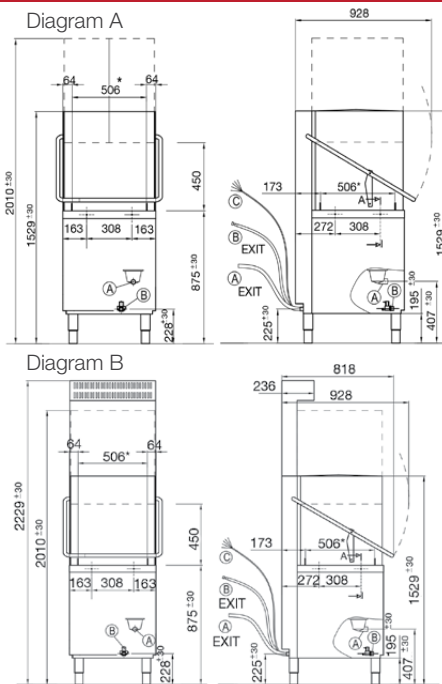
Note: Benches not included  
Optional steam condenser available (see Diagram B)

With European technology this commercial dishwashing machine has been designed for Australian conditions to be an extremely user-friendly and functional pass-through machine. Incorporating a number of technical features such as the smooth lifting hood, large pass-through door entry of 410mm, and a quick start option so when the hood closes this industrial dishwashing machine starts and keeps performing in the busiest of environments.

### FEATURES

- **Warranty** – 3 years on the control board, 1 year parts and labour on the remainder of the machine
- 60 / 120 / 180 / 720 second cycles
- Up to 1000 plates per hour\*
- Automatic detergent injection
- Corner and In-line positioning
- Easy cleaning
- Ergonomically designed
- Heat recovery unit available

- 1 x Flat Rack 500mm x 500mm
- 1 x Cutlery container
- 1 x Drain hose
- 1 x Water connection hose
- 1 x Operating manual



### TECHNICAL DATA

#### Height

Cabinet	1335 mm
Cabinet inc. legs	1500-1560 mm
With hood extended	1985-2045 mm
Usable Wash	440 mm
*With steam condenser	2210-2150 mm

#### Width

Cabinet	634 mm
Inc. handle	725 mm

#### Depth

Cabinet	745 mm
Inc. handle	818 mm

#### Capacities

Loads/Hour	up to 40*
Water per Cycle	2.7L
Wash Pump	1100W
Rinse Pump	200W
Wash Tank Litres	20
Rinse Litres	6
Element (wash)	3000W
Element (rinse)	9500W
Detergent Injection	yes
Rinse Aid Injection	yes

#### Temperatures

Wash Degrees C	60 °C
Rinse Degrees C	82 °C

#### Plumbing

Drain	Gravity (Drain Pump Optional)
Water	3/4" BSP (hot)

#### Electrical

Volts/Hz/Phase	400V/50Hz/3+N
Amps	20Amps/Ph

\* Subject to incoming water temperature



WA DEALER  
PRACTICAL PRODUCTS PTY LTD

PH: 08 9302 1299  
51 Paramount Dr Wangara WA 6065  
sales@practicalproducts.com.au  
www.practicalproducts.com.au



BUILT TO LAST