

The Australian owned and designed* Trueheat RC Series of Gas Cooking Equipment has been developed for the restaurant and cafe market with a high quality finish, designed to fulfill the busy demands within a commercial kitchen.

Powerful 24MJ/hr open burners with individual standing pilots included. 100% Flame failure controls included as standard. Matt finish Euro look cast iron trivets radiate heat and design makes it easy to move pots around the surface.

DIMENSIONS & WEIGHT

External Dimension: 300W x 803D x 455H mm

Net Weight: 31.8kg

Working height : 910mm (+/-15mm with stand)

Combustible wall clearance: Side: 150mm, Rear: 150mm

TECHNICAL DATA

Gas Type: Natural or Propane

Total Output(MJ/hr):	Natural Gas	Propane Gas
	48	48

Burner Ratings (MJ/hr):	Natural Gas	Propane Gas	Ignition Type
Open Burner (MJ/hr):	24	24	Manual

Gas Connection: 3/4" Female

AGA approval number: AGA 6652 G

SHIPPING DATA

Shipping Weight: 46kg

Shipping Dimensions: 380W x 900D x 590H mm

OPTIONAL ACCESSORIES

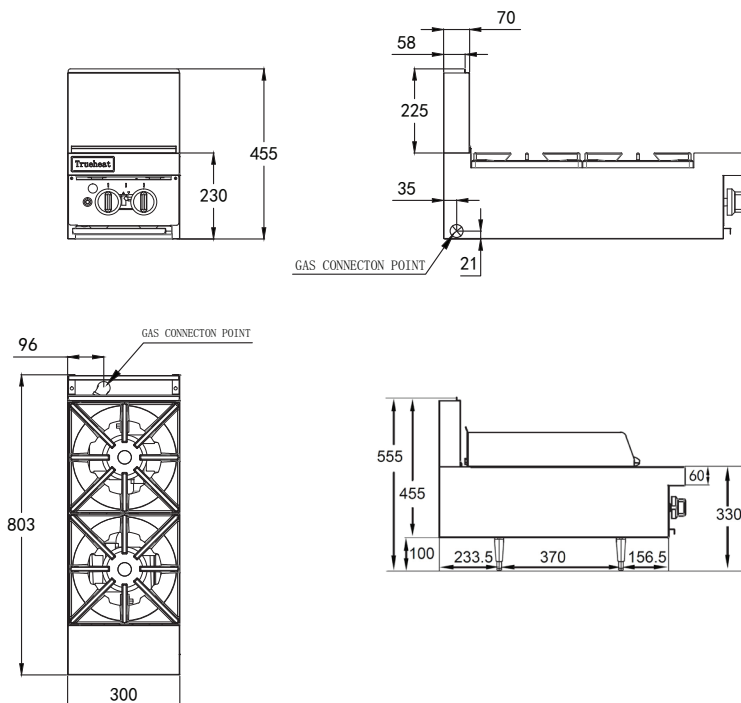
Part Number:	Description:
RCSTD3	300mm Stand complete with shelf
B05002	Adjustable leg for RCT countertop mounting
S35086	4 legs, 2 brackets, 6 screws (complete set for table top mounting)
432018-900HK	900mm 3/4 flexible gas hose with quick connect fittings and restraint
432018-1200HK	1200mm 3/4 flexible gas hose with quick connect fittings and restraint

SPECIFICATIONS ARE SUBJECT TO CHANGE WITHOUT NOTICE.

*manufactured in China



Stand sold separately



WA DEALER
PRACTICAL PRODUCTS PTY LTD

PH: 08 9302 1299
51 Paramount Dr Wangara WA 6065
sales@practicalproducts.com.au
www.practicalproducts.com.au