

## Single Pan Gas Fryer 450mm

FNLB8120G



### OVERALL CONSTRUCTION

- Stainless steel pan with 10 year limited warranty
- Bull nose welded 1.5mm 304 stainless steel
- Splashback 1.5mm 304 stainless steel
- Side panels 1.2mm 304 stainless steel
- Double skin door with 0.9mm 304 stainless exterior
- 32mm (1¼") drain valve
- 150mm legs in 63mm dia. heavy-duty 1.2mm 304 stainless steel with adjustable feet
- 2 baskets and stainless steel lid supplied standard

### CONTROLS

- Direct action thermostat reacts to + or - 1.0°C
- Thermostat range 145 - 195°C
- Over-temperature safety cut-out
- Millivolt gas valve system (no electrical supply)
- Flame failure protection on each pilot
- Piezo ignition to standing pilot burners

### CLEANING AND SERVICING

- Open stainless steel pan for easy clean
- Easy clean basket support bar
- 32mm (1½") drain valve for effective draining
- Easy clean stainless steel exterior
- Access to all parts from front of unit

- High performance single pan fryer
- Patented infra-red burner system
- Easy clean stainless steel open pan with 10 year limited warranty
- 20L oil capacity
- Large capacity cool zone
- 32mm (1¼") drain valve
- Stainless steel exterior
- Black vitreous enamel finish to front panels
- Easy service
- Fully modular

### Series Options

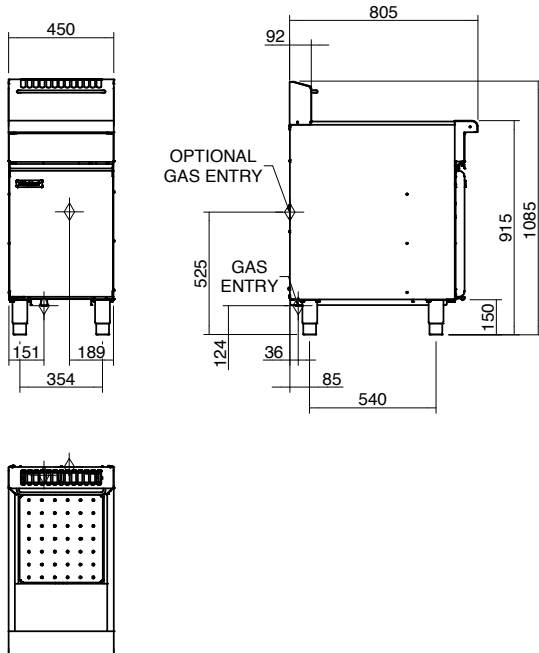
FNLB - Low back models

FNB - 215mm splashback option

# Waldorf Bold

## Single Pan Gas Fryer 450mm

FNLB8120G



### SPECIFICATIONS

#### Production rate

31kg/hr

#### Pan Size

Oil capacity 20L (37lbs shortening)

Width 365mm

Length 380mm

Oil frying depth 95mm

#### Baskets

2 chrome plated wire baskets

140mm W x 335mm D x 145mm H

Stainless steel perforated basket support plate

#### Burners

2 x 45MJ/hr infra-red burners

#### Gas power (gross)

90MJ/hr, 25kW

#### Gas connection

R 3/4 (BSP) male

300mm from RH side, 35mm from rear,  
and 125mm from floor

Optional rear connection

(refer specification drawing)

All units incorporate Natural and LP gas  
regulator

#### Dimensions

Width 450mm

Depth 805mm

Height 915mm

Incl. low back 1085mm

Incl. splashback option 1130mm

#### Nett weight

81kg nett

### Packing data

0.54m<sup>3</sup>, 122kg

Width 870mm

Depth 495mm

Height 1255mm

### Gas types

Available in Natural gas and LP gas

Please specify when ordering

Units supplied complete with gas type  
conversion kits

Other gas types on request

### OPTIONS AT EXTRA COST

Waldorf Filtamax filtration system

Fish plates

Extra baskets

Side splash guards

Joining caps

Castors

Plinth mounting



**WA DEALER**  
**PRACTICAL PRODUCTS PTY LTD**

PH: 08 9302 1299  
51 Paramount Dr Wangara WA 6065  
sales@practicalproducts.com.au  
www.practicalproducts.com.au