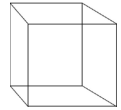


AL8

Passthrough Warewasher
W 905mm x D 760mm x H 1745mm

Wash Chamber
W 700mm
D 540mm
H 650mm



Washtech warewashers are built to improve the efficiency of operations washing oversized and/or heavily soiled items, from bakeries to production kitchens, supermarkets to hospitals. This is achieved with a continuous and consistent wash process throughout the day that is easy on your staff. With highly efficient water consumption rates, they are also light on the environment and operating costs.

The AL8 is a powerful, highly durable, simple-to-use and easy-to-maintain passthrough warewasher. It features Washtech hybrid controls which combine IP67 stainless switches, tried-and-tested switchgear, with a customisable electronic timer. Built with a large wash chamber and counterbalanced passthrough door, the AL8 is ideal for washing bins, crates, bowls and other oversized items.

Since 1981 Washtech dishwashers have been constructed from heavy-duty stainless steel, and are engineered specifically for Australian conditions and regulations. Backed by the most extensive service network and spare parts inventory in the region, your Washtech AL8 will not let you down.

Standard Features

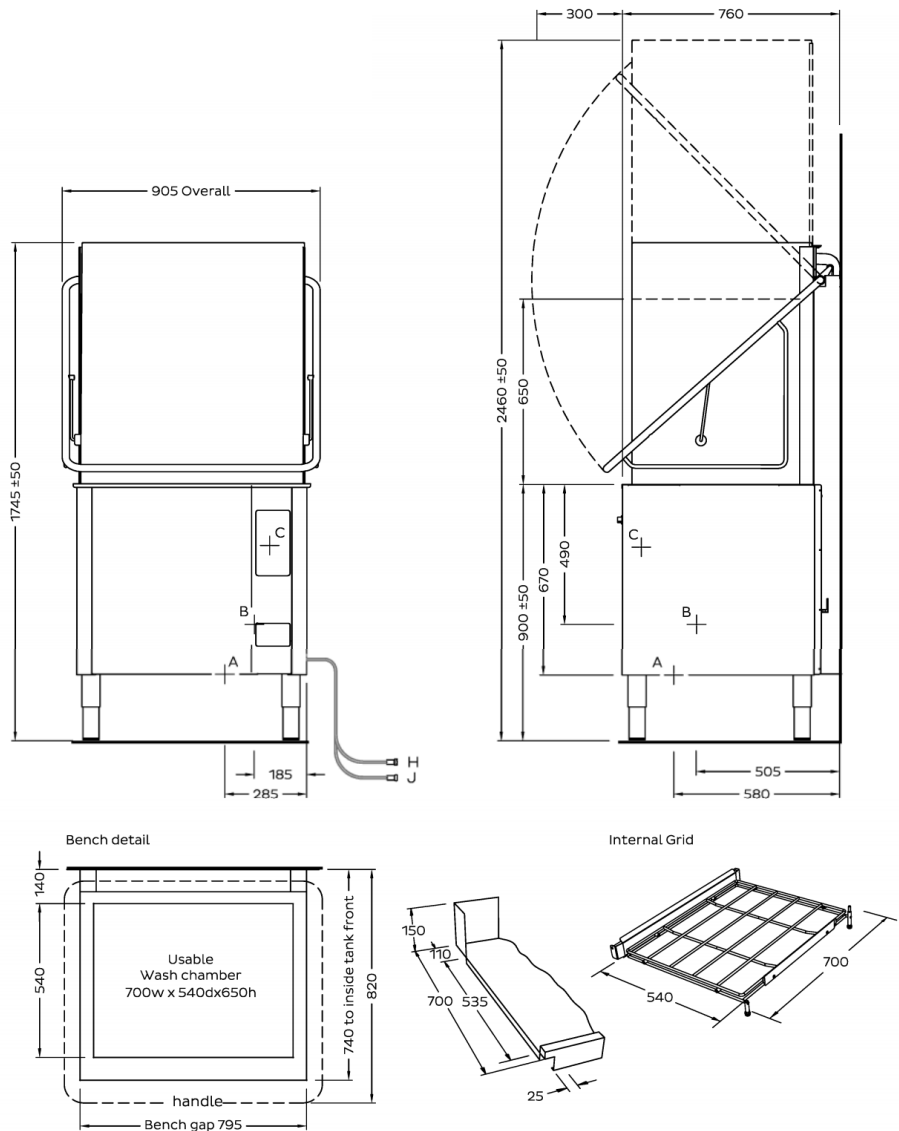
- Versatile 2, 4 and 6 minute wash cycles
- Large internal wash chamber with useable area of W 700mm x D 540mm x H 650mm
- Low hot water consumption of 2.6 litres per cycle
- Washtech hybrid controls
- Easy installation supplied with:
 - Water supply hose
 - Detergent and rinse aid pumps with injector lines
- High powered wash system
- Suitable for connection to low inlet water temperature and/or pressure (break tank and rinse pump fitted)
- Heavy-duty stainless steel construction and wash manifold
- Robust stainless steel wash and rinse arms with precision stainless steel jets
- Double heavy-duty stainless steel filtration system including dual scrap trays and separate wash inlet filter
- Wash chamber easily accessible via counter-sprung hood
- Easy loading with inline bench work
- Watermark approved backflow prevention
- Moffat's comprehensive 5-2-1 Warranty

Includes:

- 1 x 500x600mm dish rack (600 70042)
- 1 x 500x600mm cup rack (600 70043)
- 1 x 435mm cup cover (K0452)
- 1 x cutlery basket (C660508)
- 1 x cutlery container (C660503)



AL8



A - Hot Water*

Temperature	65°C
Connection	3/4" male; hose supplied
Pressure	100-350kPa
Flow	10 litres per min
Quality	Potable - refer table
Backflow Prevention	AVB
Consumption	2.6 litres per cycle

B - Waste

Connection	1.5" BSP male
Line	2.0" / 50mm minimum

C - Electrical	V	Hz	A/phase	Max kW
Three Phase	415	50	25	18.00
Three Phase	415	50	15	10.50

Dimensions

	Machine	Packed
Width (mm)	905	1000
Depth (mm)	760	910
Height (mm)	1745	1650
Weight (kg)	155	180
Volume (m ³)		1.50

Water Quality

	Min	Max
pH	7	8
Hardness (ppm)	20	100
Cl ⁻		100
SO ₄		400
Fe		0.1
Mn		0.5
Cu		0.05
Cl ₂		0.1

Isolating switch must be within 1m of, and not directly behind the machine.

* Suitable for connection to cold inlet water. For optimal productivity, use hot inlet water.

Refer to operator manual for installation instructions.



PH: 08 9302 1299
51 Paramount Dr Wangara WA 6065
sales@practicalproducts.com.au
www.practicalproducts.com.au

