

WD-243 ICS+ THREE STAGE RACK CONVEYOR

STANDARD FEATURES:

- High performance three stage rack conveyor
- Pre-wash zone with intermediate rinse
- Chemical wash zone
- Double final rinse
- 85-260 baskets per hour standard
- 1.2 litres cold water consumption per cycle
- 177 litre wash tank volume including pre-wash tank
- 2 x 1.5kW wash pump with 12kW booster heater
- ICS+ 'intelligent control system' including ESE, CRT and DTS
- High performance heat recovery system
- Electronic control system
- Easy to use control panel to adjust contact time
- Upper and lower angled wash and rinse arms
- Lightweight wash arms can be easily removed for cleaning
- Self-emptying pumps in wash and rinse zones
- Easy to access large filters and strainer baskets for less frequent emptying
- Drain pipe positioned on the frame of machine for easy cleaning
- Tank can be emptied using easy access lever
- HACCP function
- Removable front door for easy cleaning
- Stainless steel construction
- Condensate coil and heat exchanger to simultaneously reduce heat emissions and heat incoming cold water
- Fully insulated doors and panels
- Double final rinse

Upgrades and options are available, please contact Moffat for more details

TECHNICAL INFORMATION:

Dimensions

Width: 2255mm
Depth: 697mm
Height: 1675mm

Water

Hot water temperature: 55-70°C
Hot water connection: R1/2"
Hot water pressure: 100-600kPa
Cold water temperature: 5-12°C
Cold water connection: R1/2"
Cold water pressure: 250-600kPa
Flow: 11 litres per min
Water quality (Hardness): 2-7odH

Waste

Connection: 50mm dia direct
Floor drain, capacity:
3 litres per second

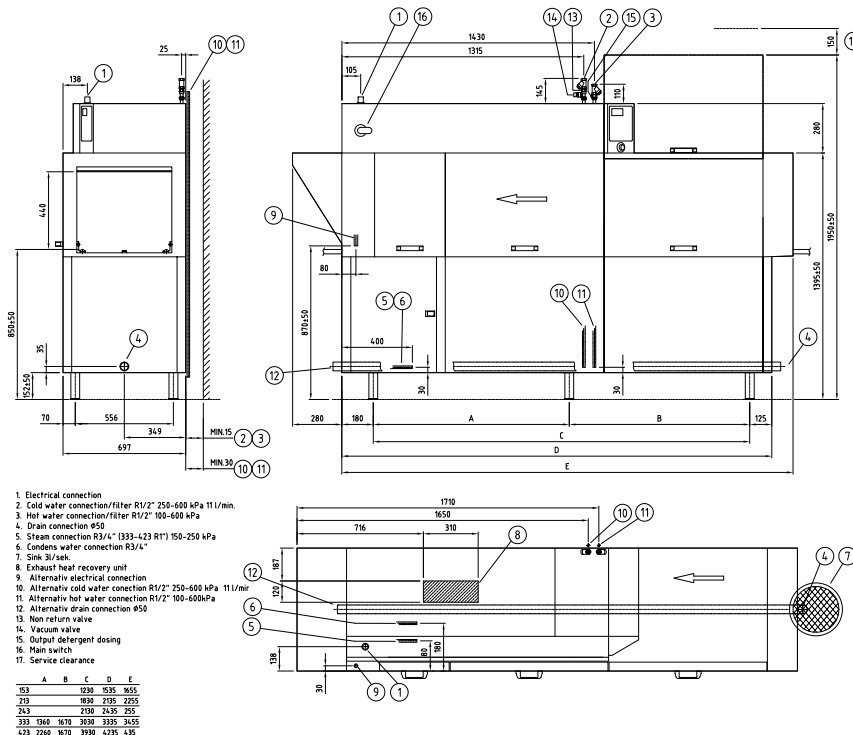
Electrical

3P+N+E 400-415V 50/60Hz
40.1kW 63A

Steam Heated

150-250 kpa @50kg ph
3P+N+E 400-415V 50/60Hz
3.4kW 20A

Refer operator manual for
complete installation instructions



In line with policy to continually develop and improve its products, Moffat Limited reserves the right to change specifications and design without notice.